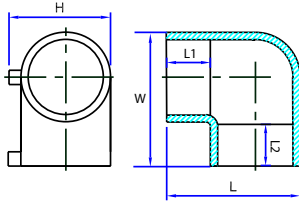


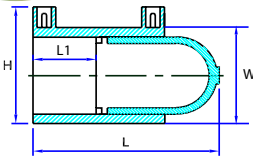
Product Range

90° elbows



Nominal diameter mm	Pack qty	Dimensions mm					Max weight kg	Fuse time sec	Cool time min	Product code 40 V 4.0 mm pin
		H	L	L1	L2	W				
20	20*	50	74	41	41	74	0.04	44	4	WA3339
25	20	54	78	41	41	78	0.05	25	5	WA3340
32	20	63	85	40	40	85	0.08	55	7	WA3341
40	10	72	99	45	45	99	0.12	74	6	WA3342
50	10*	88	114	50	50	114	0.22	75	8	WA3343
63	5	100	143	58	58	143	0.4	60	8	WA3345
75	5*	115	158	59	59	158	0.54	120	13	WA3346
90	5	133	195	77	77	195	0.98	80	9	WA3347
110	1	154	218	80	80	218	1.39	180	14	WA3348
125	1	178	246	82	82	246	2.14	90	7	WA3349
140	1	185	266	92	92	266	1.85	260	20	WA3350
160	1	217	307	100	100	307	3.86	300	21	WA3351
180	1	240	329	101	101	329	5.16	260	16	WA3352

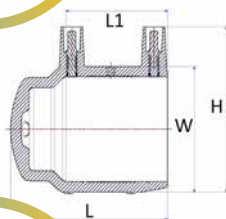
Coupler cap



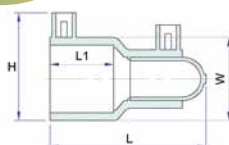
End caps

Nominal diameter mm	Pack qty	Dimensions mm				Max weight kg	Fuse time sec	Cool time min	Product code 40 V 4.0 mm pin
		H	L	L1	W				
20 ²	20*	52	92	40	29	0.04	40	4	WA1202
25 ⁴	20	53	97	40	33	0.04	48	5	WA1203
32 ²	20	61	106	32	42	0.07	18	4	WA1204
40 ⁴	10	70	112	40	52	0.1	26	5	WA1205
50 ⁴	10*	84	120	45	64	0.11	38	4	WA1206
55 ⁴	10*	99	157	58	80	0.3	40	5	WA1207
63 ³	10	101	96	61	77	0.15	30	5	WB1208
75 ³	10*	114	106	68	91	0.23	40	4	WB1209
90 ³	10	142	119	78	109	0.36	70	12	WB1210
110 ⁴	4*	154	242	77	136	1.13	120	10	WA1211
125 ³	4	180	137	86	151	0.72	100	11	WB1212
140 ³	1	197	146	91	169	0.99	70	8	WB1213
160 ²	1	209	310	92	195	3.13	300	22	WA1214
180 ³	1	241	169	104	216	1.85	170	12	WB1215
200 ⁴	1	262	350	113	246	4.63	360	27	WA1217
225 ⁴	1	285	350	115	270	5.03	330	18	WA1221
250 ⁴	1	312	365	109	296	6.57	440	22	WA1223

1-piece end cap



Reducer cap



Note:

- 2- Coupler cap
- 3- Electrofusion coupler and end cap
- 4- Electrofusion reducer and end cap

* Fittings available to purchase as individual items.

Always refer to the fitting and packaging label for the most up to date information.