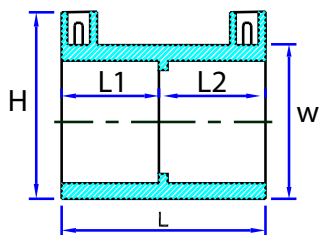




**UNIVERSAL ELECTROFUSION
FITTINGS FOR WATER,
WASTEWATER, GAS, POWER
& RENEWABLE ENERGY
APPLICATIONS**

Product Range

Couplers



Nominal diameter mm	Pack qty	Dimensions mm					Max weight kg	Fuse time sec	Cool time min	Product code 40 V 4.0 mm pin
		H	L	L1	L2	W				
20	20*	52	83	40	40	29	0.03	40	4	WA0202
25	20	52	81	40	40	32	0.03	10	4	WA0203
32	20	61	81	40	40	42	0.05	18	4	WA0204
40	10	66	81	40	40	49	0.05	35	4	WA0205
50	10*	87	99	48	48	63	0.13	75	9	WA0206
55	10*	101	118	58	58	81	0.3	44	5	WA0207
63	10	98	105	52	52	77	0.16	28	5	WA0208
75	10*	113	125	62	62	93	0.31	120	14	WA0209
90	10	131	125	62	62	109	0.39	90	10	WA0210
110	4*	152	161	79	79	132	0.72	130	13	WA0211
125	4	168	157	77	77	151	0.88	120	15	WA0212
140	1	182	194	96	96	162	1.08	220	18	WA0213
160	1	209	186	92	92	195	1.81	300	22	WA0214
180	1	229	207	102	102	215	2.25	220	12	WA0215
200	1	260	211	106	102	246	3.49	400	16	WA0217
225	1	285	218	109	105	266	3.78	400	22	WA0221
250	1	315	220	109	105	296	4.26	600	37	WA0223
280	1	335	283	138	138	320	5.86	600	32	WA0227
315	1	387	266	133	129	380	8.6	850	33	WA0229
355	1	415	319	158	158	407	9.2	1150	65	WA0231
400	1	465	340	169	169	455	12.3	1750	60	WA0233

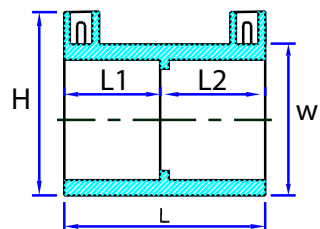
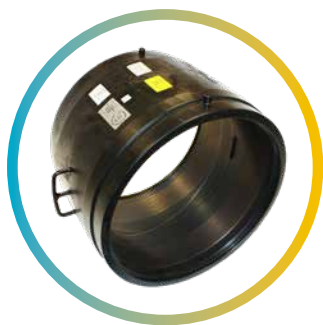
Note: *Fittings available to purchase as individual items.

SDR17 couplers



Nominal diameter mm	Pack qty	Dimensions mm					Max weight kg	Fuse time sec	Cool time min	Product code 40 V 4.0 mm pin
		H	L	L1	L2	W				
250	1	293	220	105	110	283	3.08	440	25	WA0224
315	1	362	266	133	129	356	5.68	660	36	WA0230

Easigrip® couplers - 80 V



Nominal diameter mm	Pack qty	Dimensions mm					Max weight kg	Warm-up time sec	Soak time sec	Fuse time sec	Cool time min	Product code 80 V 5.7mm pin
		H	L	L1	L2	W						
355	1	415	319	158	158	407	9.2	-	-	700	35	WA0131
400	1	465	340	169	169	456	12.3	-	-	800	44	WA0133
450 ¹	1	526	376	187	187	517	17	180	600	700	45	WA0135
500 ¹	1	581	374	186	186	574	21.5	180	600	800	55	WA0137
560 ¹	1	647	398	197	197	647	27.4	500	900	2100	140	WA0139
630 ¹	1	720	407	202	202	720	33.6	600	900	2250	100	WA0140

Note:

1- Couplers use a 3-part 80 V electrofusion process. Compatible equipment must be used to weld the Easigrip® couplers. Please refer to the Easigrip® instruction details within this brochure.

Always refer to the fitting and packaging label for the most up to date information.

Product News

ENVIRONMENTAL BENEFITS OF 250mm AND 315mm SDR17 COUPLERS

Significantly reduced fusion times

- Less energy needed to produce the weld - reducing fuel and emissions from a generator
- Quicker to install - more joints per day causing less environmental disruption

Smart design

- Up to 33% reduction in PE materials
- Lightweight design



- Compatible with PE80 and PE100 pipes
- Exposed wire technology for optimum joint integrity
- Universal fitting for water and gas